



Masaar is a residential sanctuary formed by eight gated communities, with abundant green space and every necessity close at hand.

Featuring over **50,000** trees, lush green landscapes, and thoughtfully designed townhouses and villas, Masaar blends luxury living with tranquility.

KEY DETAILS

GATED FOREST
COMMUNITY WITH OVER
50,000 TREES,
PROMOTING A SERENE,
NATURE-FOCUSED
LIFESTYLE.

OFFERS 2-5 BEDROOM
TOWNHOUSES AND
VILLAS, ACROSS
MULTIPLE CLUSTERS.

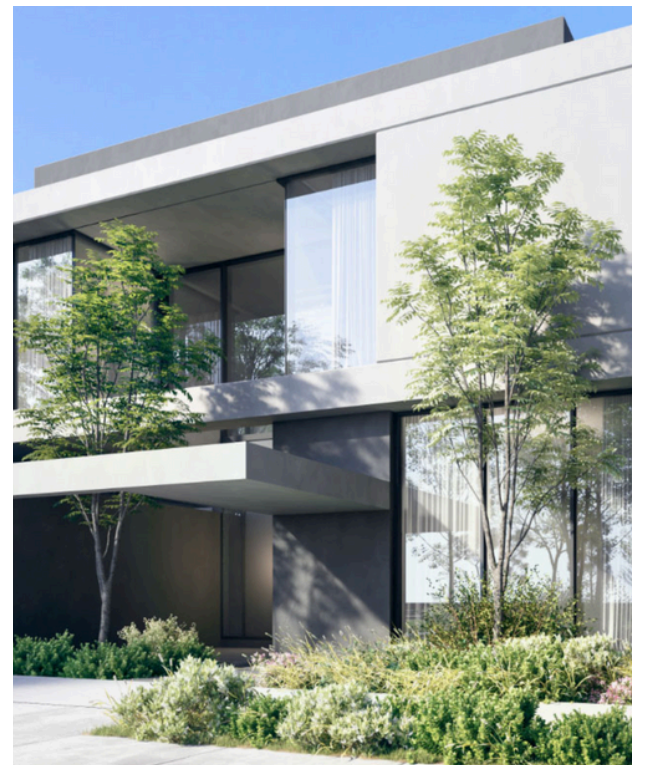
AMENITIES

CENTRAL FOREST SPINE
WITH CYCLING AND
JOGGING TRACKS.

FITNESS CENTERS,
PARKS, AND CHILDREN'S
PLAYGROUNDS.

COMMUNITY CENTER,
RETAIL, AND DINING
OPTIONS.

SCHOOLS, A MOSQUE,
AND HEALTH FACILITIES
WITHIN THE AREA.





DEVELOPER

ARADA, KNOWN FOR
HIGH-QUALITY
RESIDENTIAL
DEVELOPMENTS IN
SHARJAH.

COMPLETION

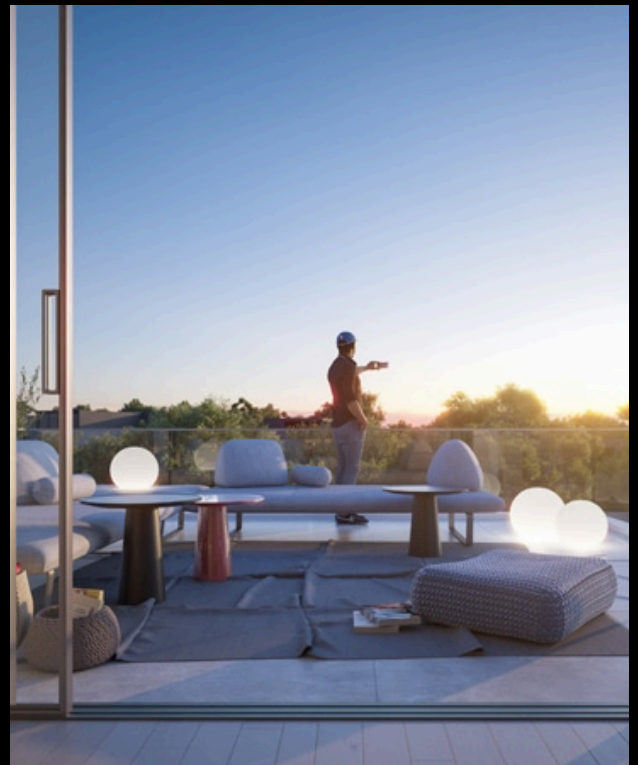
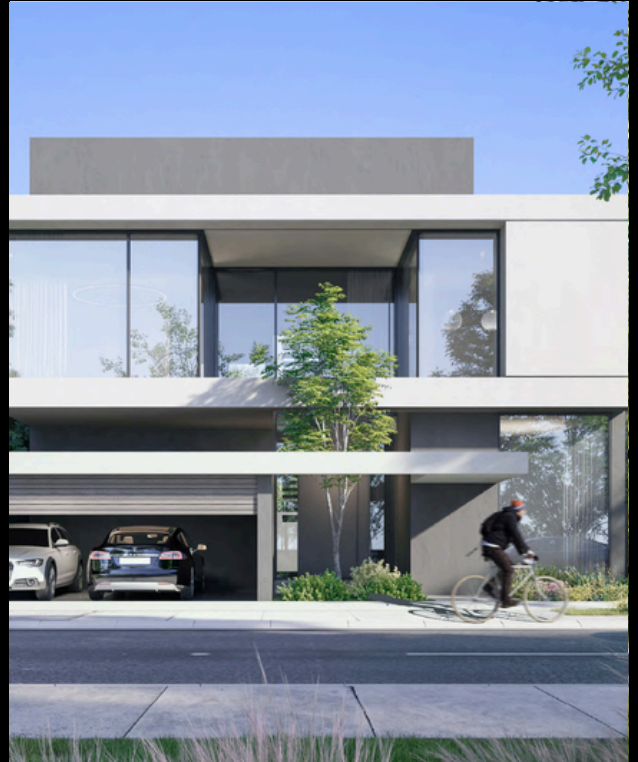
TIMELINE: PHASED, WITH
FINAL HANDOVER
EXPECTED BY 2025.

ACCESSIBILITY

ACCESS TO EMIRATES
ROAD, WITH QUICK
ACCESS TO DUBAI,
SHARJAH, AND OTHER
KEY AREAS IN THE UAE.

CONNECTIVITY

10 MINS TO ALJADA, 15
MINS TO SHARJAH
AIRPORT, 25 MINS TO
UNIVERSITY CITY AND 28
MINS TO ETIHAD RAIL.



FLOOR PLAN

5 Bedroom Saro Forest Signature Villa - A

Ground Floor: 2,989 sq. ft.
First Floor: 2,431 sq. ft.
Second Floor: 1,264 sq. ft.
Total: 6,684 sq. ft.



Ground Floor

الطابق الأرضي: 2,989 قدم مربع
الطابق الأول: 2,431 قدم مربع
الطابق الثاني: 1,264 قدم مربع
الإجمالي: 6,684 قدم مربع

فيلا سرو فوربيست الفاخرة من 5 غرف نوم - A



First Floor

5 Bedroom Saro Forest Signature Villa - A

Ground Floor: 2,989 sq. ft.
First Floor: 2,431 sq. ft.
Second Floor: 1,264 sq. ft.
Total: 6,684 sq. ft.



Second Floor

@zarinrealestates | +971 55 649 6873

WWW.ZARINREALESTATES.COM